

# beko

## Tea Maker

User Manual



BKK 2220 IC

EN



01M-8814051200-5021-04

## Please read this guide first!

Dear Customer,

Thank you for choosing a Beko product. We would like you to achieve the optimal efficiency from this high quality product which has been manufactured with the state of the art technology. Please make sure you read and understand this guide and supplementary documentation fully before use and keep it as a reference. Include this guide with the unit if you hand it over to someone else. Observe all warnings and information herein and follow the instructions.

## Symbols and their meanings

Following symbols have been used throughout this guide:



Important information and beneficial advices regarding the usage of the device.



**WARNING:** Warnings about hazards to life and property.



Suitable for contact with food.



Warning about hot surfaces.



Warning of electric shock.



**RECYCLED &  
RECYCLABLE  
PAPER**

# CONTENTS

---

## **1 Important safety and environmental instructions 4**

---

- 1.1 General safety ..... 4
- 1.2 Compliance with the WEEE regulations and waste disposal ..... 8
- 1.3 Packaging information ..... 8

## **2 Your tea maker 9**

---

- Technical data..... 9

## **3 Utilisation 10**

---

- 3.1 First operation ..... 10
- 3.2 Start Up ..... 10
- 3.3 Turn off the appliance ..... 12

## **4 Cleaning and maintenance 13**

---

- 4.1 Cleaning ..... 13
  - 4.1.1 Descaling ..... 14
- 4.2 Storage ..... 15
- 4.3 Transportation and shipping ..... 15
- 4.4 What to do for energy saving ..... 15

# 1 Important safety and environmental instructions

This section contains safety instructions to prevent hazards that can result in injury or property damage. Any warranty is void if these instructions are not followed.

## 1.1 General safety

- This appliance complies with international safety standards.
- Appliance may be used by children above age of 8, persons with limited physical, perceptual or mental abilities or persons with a lack of experience and knowledge if they are supervised or given instructions on the operation of the appliance and any relevant risks they may encounter.
- Children should not tamper with the appliance. Cleaning and user maintenance should not be done by children over 8 years of age unless they are under the supervision of adults.
- Keep the appliance and its cable out of the reach of children under 8 years of age.
- Do not use the appliance if the power cord or the appliance is damaged. Contact authorised service.

# 1 Important safety and environmental instructions

- This appliance is not designed for commercial use, it is intended for use at home and in similar applications as specified below:
  - In personnel kitchen areas in shops, offices and other working areas,
  - Ranches,
  - Areas used by customers in motels and hotels, and other residential settings,
  - Bedrooms and breakfast locations.
- Your mains power supply should be in align with the specified information on the type tag of the appliance.
- For additional protection, this appliance should be connected to a household appliances residual current appliance with a maximum nominal current of 30 mA.
- Use the appliance in a grounding plug.
- Do not use the appliance with an extension cord.
- To prevent damage to the power cord, prevent it from being pinched, crimped or rubbed against sharp edges.

# 1 Important safety and environmental instructions

- Do not touch the appliance or the plug of the appliance with damp or wet hands.
- Do not fill up the appliance above maximum level mark. Boiling water may splash around.
- Do not fill the appliance below the minimum line.
- Do not remove the appliance's lid while the water is boiling.
- Position the lid and handle of the appliance so that they shall not be placed over the steam outlet grooves against the risk of contact with hot steam.
- Use the appliance with its carafe.
- Do not open the lid of the teapot while brewing.
- Position the ventilation outlets of the appliance lid so that you shall not be exposed to hot steam.
- Hold the appliance by its handle only.
- Do not operate the appliance without water inside.
- Fill the appliance with water by removing it from the base unit.
- Use the appliance with the supplied base unit only.
- Use and store the appliance on a flat and secured surface.

# 1 Important safety and environmental instructions

- Do not disassemble the appliance.
- Use only original parts or parts recommended by the manufacturer.
- Do not immerse the appliance or its power cord in water or in any fluid.
- Before cleaning the appliance, unplug it and dry it completely after cleaning.
- Do not immerse the appliance or its power cord in water.
- Do not ever immerse the appliance, its base unit or its power cord in water or in any other fluid.
- If you keep the packaging materials, keep them out of the reach of children.
- This appliance is intended for boiling water only. It cannot be used for boiling other fluids, this may cause hazards.
- Do not touch the surface and the plate without ensuring that the surfaces of the appliance and the heating plate are cooled down.

# 1 Important safety and environmental instructions

## 1.2 Compliance with the WEEE regulations and waste disposal



This product does not contain the dangerous and prohibited materials indicated in the "Regulation on The Control of Waste Electrical and Electronic Equipment" published by Ministry of Environment and Urbanisation of Republic of Turkey. Complies with WEEE Regulations. This product was manufactured from recyclable and reusable high quality parts and materials. Therefore, do not dispose of this product with other domestic wastes at the end of its life cycle. Take it to a collection point for recycling of electrical and electronic equipment. You can ask your local administration about these collection points. You can help protect the environment and natural resources by delivering the used products for recycling. Before disposing of the product, cut the power cord and break the lock on the door, if any, for children's safety.

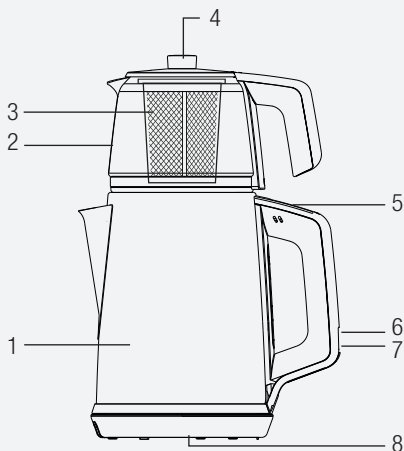
## 1.3 Packaging information



The product's packaging is made of recyclable materials, in accordance with the National Legislation. Do not dispose of the packaging waste with the household waste or other wastes, dispose it to the packaging collection areas specified by local authorities.



## 2 Your tea maker



1. Kettle
2. Teapot
3. Stainless tea filter
4. Teapot lid
5. Boiling (☁) /  
keep warm button (☰)
6. Heater pilot light
7. On / Off button
8. Base unit

### Technical data

**Voltage:** 220-240 V~, 50/60 Hz

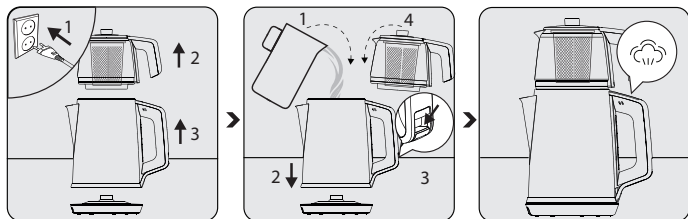
**Power (boiling):** 1650 W

The rights to make technical and design changes are reserved.

The values provided with the appliance or its accompanying documents are laboratory readings in accordance with the respective standards. These values may differ depending on the use and ambient conditions.

## 3 Utilisation

### 3.1 First operation

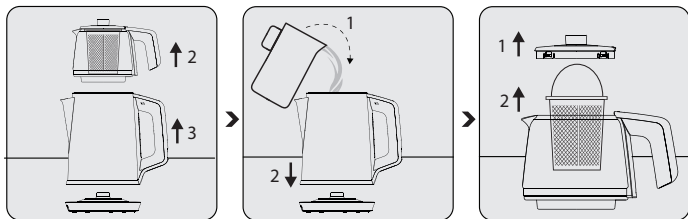


Place the product on a flat and dry surface. Plug the appliance. Disconnect the kettle (1) from the base unit (8) after removing the teapot (2) from it.

Fill the kettle (1) to the max. line and place it on the base unit (8). Push the on / off switch (7) down slightly to the ON (I) position.

Turn the boiling / keeping hot switch (5) to the boiling (☁) position. The heater pilot light (6) turns red. After the water boils, the appliance automatically switches to the keeping hot (☁) position and the heater pilot light turns green. Pour the boiling hot water and shake the inside again with water.

### 3.2 Start Up



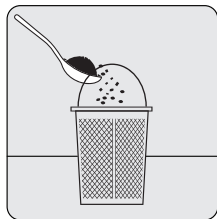
Remove the kettle (1) from the base unit (8) after lifting the teapot (2).

Fill the kettle (1) to the max. line and place it on the base unit (8).

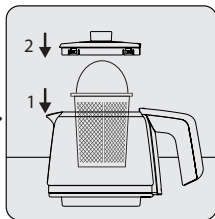
Open the teapot lid (4). Remove the tea filter (3) inside the teapot (2).

### 3 Utilisation

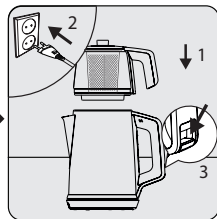
**i** If you prefer, you can fill the teapot (2) without removing the tea filter (3).



Add the desired amount of tea to the filter (3).



Place the tea filter (3) into the teapot (2) and close the teapot lid (4).



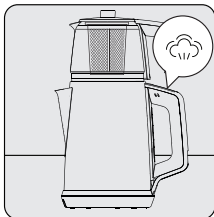
Place the teapot (2) on the kettle (1). Plug in the appliance. Push the on / off switch (7) down to the ON (I) position.

**i** If you pour the tea in the tea filter (3) through the water and pour it out, you can get a more delicious tea. Do not leave water in the teapot (2).

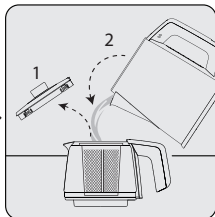


**WARNING:** Do not operate the appliance when there is no water in the kettle (1) or when it is below the min. line.

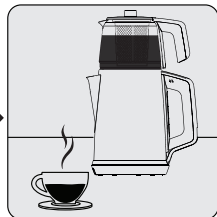
## 3 Utilisation



Turn the boiling / keeping hot switch (5) to the boiling (☁️) position.



Put the boiling water into the teapot (2) to brew the tea.



Your tea is ready to serve when it is brewed.

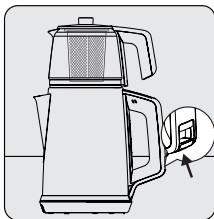


During the keeping hot process, the appliance reduces the heating power, keeps the water constantly hot and reduces energy consumption.

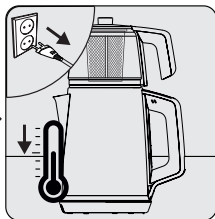


When you add water to the kettle (1), turn the boiling / keeping hot switch (5) back to the boiling (☁️) position.

### 3.3 Turn off the appliance



When use is finished, push the on / off switch (7) upwards to the OFF position (0).



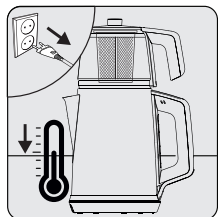
Unplug the appliance. Let the appliance cool down.

## 4 Cleaning and maintenance

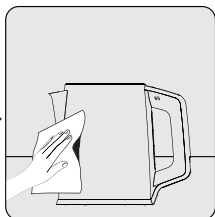
### 4.1 Cleaning



**WARNING:** Do not use benzene, solvents, abrasive cleaners, metal objects or hard brushes to clean the appliance.



Unplug the appliance.  
Let the appliance cool down.



Use a damp cloth and a small amount of dish soap to clean the outer surface of the kettle (1).



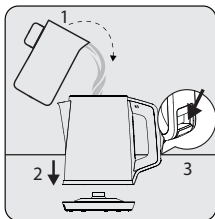
Clean the teapot (2), tea filter (3) teapot lid (4) with a small amount of dishwashing detergent and sponge.



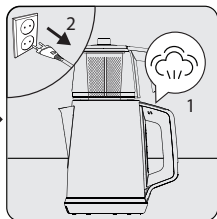
**WARNING:** Do not wash the base (8), kettle (1) and teapot (2) in the dishwasher.

## 4 Cleaning and maintenance

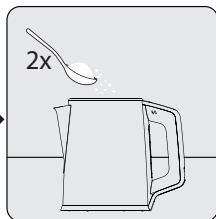
### 4.1.1 Descaling



Fill the kettle (1) to the max. line and place it on the base unit (8). Place the teapot (2) on the kettle (5). Push the on / off switch (7) down to the ON (I) position.



Turn the boiling / keeping hot switch (5) to the boiling (☁) position. After the water boils, unplug the appliance from the socket.



Pour 1 cup of white vinegar or 2 tablespoons of lemon salt into the boiling water. After letting it sit for a few hours, drain the water and rinse it thoroughly. Operate the device once again with only water.



**WARNING:** If you do not perform the descaling operation for a long period of time, the base of the water reservoir of the appliance shall be completely covered with lime and rendered inoperational.

## **4 Cleaning and maintenance**

---

### **4.2 Storage**

- If you do not intend to use the device for a long time, store it carefully.
- Ensure that the appliance is unplugged, cooled down and completely dry.
- Wrap the cable of the appliance on the cable wrapping area under the base unit.
- Store the appliance in a cool dry place.
- Store the appliance and its cord out of the reach of children.

### **4.3 Transportation and shipping**

- During transportation and shipping, carry the appliance with its original packaging. The packaging of the appliance will protect the appliance against physical damage.
- Do not place heavy objects on the device or its packaging. The appliance may get damaged.
- If the appliance is dropped, the appliance may not operate or permanent damage may occur.

### **4.4 What to do for energy saving**

- Turn off and unplug the appliance after each use.