



Grill and Toaster

User Manual



TM 9046 S

EN



01M-8819981100-0823-01

Please read this guide first!

Dear Customer,

Thank you for choosing an Arçelik product. We would like you to achieve the optimal efficiency from this high quality product which has been manufactured with the state of the art technology. Please make sure you read and understand this guide and supplementary documentation fully before use and keep it as a reference. Include this guide with the unit if you hand it over to someone else. Observe all warnings and information herein and follow the instructions.

Symbols and their meanings

Following symbols have been used throughout this guide:



Important information and beneficial advices regarding the usage of the device.



WARNING: Warnings about hazards to life and property.



Suitable for contact with food.



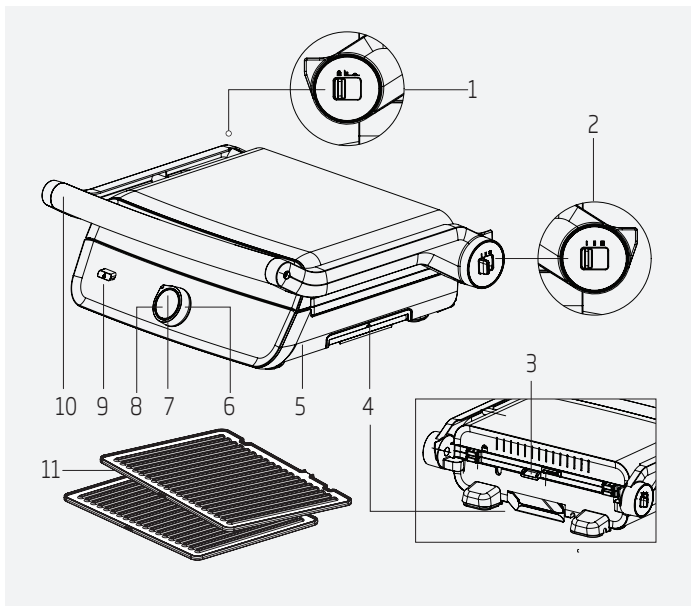
Warning of electric shock.






Warning about hot surfaces.



**RECYCLED &
RECYCLABLE
PAPER**



Controls and parts

1. Locking bolt
(Off , Half on , On )
2. Level adjustment slider (I - II - III)
3. Oil drainage channel
4. Removable oil collection container
5. Cable winding slot (under the device)
6. Program selection button
7. Status indicator light
8. On/Off switch
9. Plate removal button
10. Handle
11. Removable cooking plates

Technical data

Power supply:

230 V ~, 50-60 Hz

Power: 2400 W

The right to make technical and design changes is reserved.

The values provided with the appliance or its accompanying documents are laboratory readings in accordance with the respective standards. These values may differ depending on the use and ambient conditions.

CONTENTS

Controls and parts	3
Technical data	3

1 Important safety and environmental instructions 5

1.1 General safety	5
1.2 Compliance with the WEEE regulations and waste disposal	9
1.3 Packaging information	9
1.4 What to do for energy saving	9

2 Usage 10

2.1 Intended use	10
2.2 First operation	10
2.3 Operation	10
2.4 Programs table	11
2.5 Cooking times	13
2.6 Toasting and grilling	14
2.7 Grease collection tray	18
2.8 Switching off the device	18
2.9 Removing / installing the plates	19

3 Cleaning and maintenance 20

3.1 Cleaning	20
3.2 Storage	22
3.3 Transportation and shipping	22

This section contains safety instructions to prevent hazards that can result in injury or property damage.

Any warranty is void if these instructions are not followed.

1.1 General safety

- This appliance complies with international safety standards.
- The device is not for commercial use, it is only suitable for domestic use.
- This device is aimed to be used in household and similar applications such as the places specified below:
 - Staff kitchen areas in shops, offices and other working environments,
 - Farm houses,
 - Places used by customers in motels, hotels and other residential-type environments,

-In hostel-type places.

- Appliance may be used by children above age of 8, persons with limited physical, perceptual or mental abilities or persons with a lack of experience and knowledge if they are supervised or given instructions on the operation of the appliance and any relevant risks they may encounter. Children should not tamper with the appliance.
- Cleaning and user maintenance should not be carried out by children unless they are over 8 years of age and under supervision.
- Keep the appliance and its cable out of the reach of children under 8 years of age.
- Do not use the appliance if the power cord or the appliance is damaged. Contact authorised service.
- Your mains power supply should be in align with the specified information on the type tag of the appliance.
- For additional protection, this device must be

connected to a residual current device with a maximum rated value of 30 mA.

- Use the appliance in a grounding plug.
- Do not use the appliance with an extension cord.
- To prevent damage to the power cord, prevent it from being pinched, crimped or rubbed against sharp edges.
- Do not touch the plug of the appliance while your hands are damp or wet.
- Do not immerse the appliance or its power cord in water.
- Do not leave the appliance unattended while it is plugged in.
- The outer surface heats up during use. To avoid the risk of burns, do not touch hot surfaces.
- Do not leave metal cooking utensils and utensils on the cooking plates.
- Use and store the appliance on a secured surface.
- Do not disassemble the appliance.

- Use only original parts or parts recommended by the manufacturer.
- Unplug the appliance before cleaning and dry all parts completely after cleaning.
- Clean only the outer surface and plates according to the instructions in the Cleaning and Maintenance section.
- The appliance is not suitable for outdoor use.
- Do not operate the appliance with an external timer or a separate remote control system.
- Food may catch fire due to overheating. Do not allow the appliance to come into contact with or be covered by flammable materials such as curtains, fabrics, walls, etc.
- Do not pour oil or similar liquids on the appliance after it has heated up.
- Do not use the appliance in or near explosive or flammable environments and substances.
- Charcoal or similar combustible fuels must not be used in this appliance.

- If you keep the packaging materials, keep them out of the reach of children.

1.2 Compliance with the WEEE regulations and waste disposal



This product does not contain the dangerous and prohibited materials indicated in "Waste Electrical and Electronic Equipment Control Regulation" published by Ministry of Environment and Urbanisation of the Republic of Turkey. Complies with WEEE Regulations. This product was manufactured from recyclable and reusable high quality parts and materials. Therefore, do not dispose of this product with other domestic wastes at the end of its life cycle. Take it to a collection point for recycling of electrical and electronic equipment. You can ask your local administration about these collection points. You can help protect the environment and natural resources by delivering the used products for recycling.

1.3 Packaging information



The product's packaging is made of recyclable materials, in accordance with the National Legislation. Do not dispose of the packaging waste with the household waste or other wastes, dispose it to the packaging collection areas specified by local authorities.

1.4 What to do for energy saving

Turn off and unplug the appliance after each use. Choose appropriate temperatures when cooking your food.

You can choose the "Eco" program for quantities of food suitable for cooking on one plate.

2 Usage

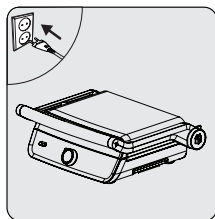
2.1 Intended use

This appliance is intended for home use and food preparation only, it is not suitable for professional use.

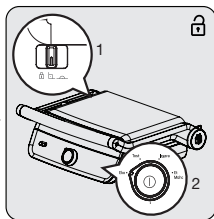
2.2 First operation

Operate the device empty and make sure that the room is well ventilated, as smoke may be emitted when first used.

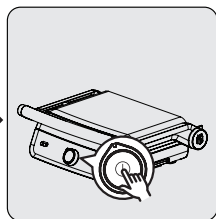
2.3 Operation



Place the device on a flat surface. Insert the plug of your appliance into the socket.



Move the locking slider (1) to the position suitable for the program you want to cook with. (See 2.6)
Set the program selector switch (2) to your preferred cooking program.



Switch on your appliance by pressing the on/off button (8). When your appliance starts, the status indicator light (7) will turn red. When the light turns blue, your appliance is ready for cooking.



WARNING: Make sure that both cooking plates (11) are inserted before switching on the appliance.

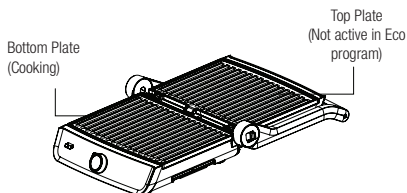
Your product will switch off automatically after 1 hour. If your cooking process continues, you can turn your appliance on again.

2 Usage

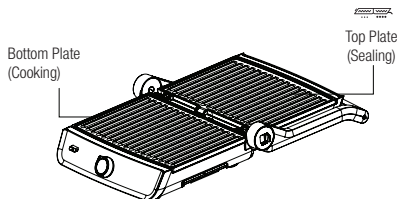
2.4 Programs table

Your grill and toaster has 4 different cooking programs. The table below shows the cooking plate usage status of the programs in your device and the food types suitable for the program.

- **Eco program:** In this program, only the bottom cooking plate works. It can be preferred for smaller portions.



- **Toast:** Can be used for all types of toast and sandwiches.
- **Grill:** Suitable for grilled food types.
- **Meat sealing:** Suitable for sealing and grilling meat at high temperature without losing the juices. In the meat sealing program, the upper plate, where the temperature is higher, should be used for sealing, followed by the lower plate, where the temperature is suitable for cooking.



2 Usage

Program	License Plate Heating Status (Unilateral / Bilateral)	Food Types
ECO	It's just Bottom Plate	Sausage
		Bagel
		Pastries
TOAST	Bottom and Top Plate	Sandwich
		Kumru
		Toast with Kashar
		Toasting Bread
		Toasted Bread with Kashar and Sausage
GRILL	Bottom and Top Plate	Chicken (Drumstick + Wings + Breast)
		Salmon
		Sea Bream
		Sea bass
		Green-Red Pepper
		Mushroom
		Eggplant
		Pumpkin
		Shrimp
		Asparagus
		Shrimp
MEAT SEALING	For sealing Top Plate Cooking Bottom Plate	Beef Ribeye
		Steak
		Beef Tenderloin
		Meatball

2 Usage

2.5 Cooking times

The following table gives an overview of the different cooking times. Cooking times depend on the thickness and consistency of the food. The recommended time and quantity should be considered as a minimum.

For the best possible and most delicious results, please refer to the recipe book specially designed for your appliance.

Program	Food	Thick-ness (cm)	Flip Repeat	Dura-tion (min)
ECO	Sausage	0.5	1.5	3
		1	2	4
		2.5	2.5	5
	Bagel	-	2	4
	Pastry	-	2	4
TOAST	Kumru	-	-	5
	Toast with Kashar	-	-	2.5
	Toasting Bread	-	-	1.5
	Toasted Bread with Kashar and Sausage	-	-	5
GRILL	Chicken Thigh	3	5	25
	Chicken Wings	3-4	5	20
	Chicken Breast	2.5-3	3	16
	Salmon	2.5-3	5	20
	Sea Bream (Whole)	3-3.5	3	11
	Sea Bream (Fillet)	1.5	3	10
	Sea bass	3-4	5	30
	Pepper	-	5	15
	Mushroom	-	5	15
	Eggplant	-	5	15
	Pumpkin	-	5	15
	Shrimp	-	2	5
MEAT SEALING	Ribeye (Medium Rare)	2	2	10 (4 min sealing)
	T-Bone (Medium Rare)	3	2.5	11 (5 min sealing)
	Tenderloin (medium rare)	2	2	9 (4 min sealing)
	Meatballs (Medium Cooked)	-	0.5	6 (1 min sealing)

2 Usage



Please refer to the recipe book for the cooking time for different cooking levels (rare, overcooked).

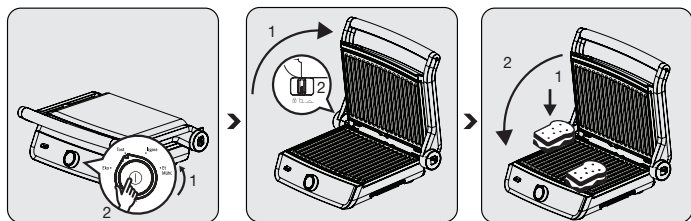
2.6 Toasting and grilling




You can adjust the level adjustment slider (2) to I - II - III according to the thickness of the food.

Device plates in closed position

This position is suitable for grilling and toasting using the upper and lower cooking plates in the closed position. It should be preferred for sandwiches, toast, pancakes, hamburgers, etc.



Before turning on the appliance, use the program selection button (6) to set the desired program. Then press the on/off button (8) in the center. The appliance will start to operate.

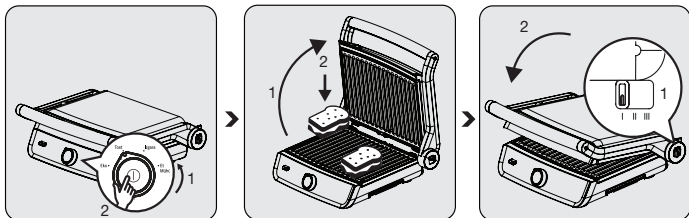
Lift the top cover of the appliance slightly and move the locking slide (1) to the half-open “” position. Open the top cover of the appliance upwards by holding the handle (10).

Place the food to be cooked on the cooking plate (11). Close the top cover of the appliance downwards by holding the handle (10).

2 Usage

Appliance plates in grill oven position

In this position the plates will not touch each other. It should be preferred for foods such as sandwich, panini that are not pressed but need to be kept warm from above.



Before turning on the appliance, use the program selection button (6) to set the desired program. Then press the on/off button (8) in the center. The appliance will start to operate.

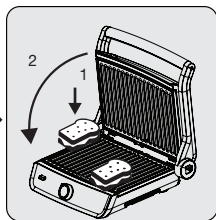
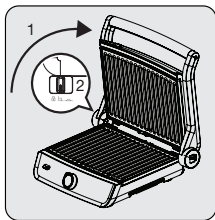
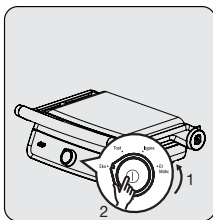
Open the top cover of the appliance upwards by holding the handle (10). Place the food to be cooked on the cooking plate (11).

Adjust the level adjustment slider (2) of the device to the level (I - II - III) suitable for the thickness of your food and close the handle (10) downwards.


2 Usage

Device plates in half-open position

The lower cooking plate must be used for cooking food.



Before turning on the appliance, use the program selection button (6) to set the desired program. Then press the on/off button (8) in the center. The appliance will start to operate.

Open the top cover of the appliance upwards by holding the handle (10). Turn the locking slide (1) of the appliance to the “” position to start cooking.

Place the food to be cooked on the cooking plate (11).

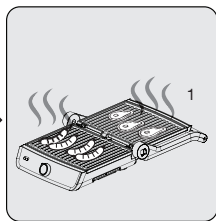
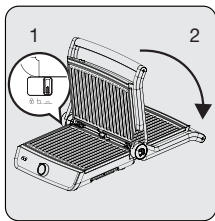
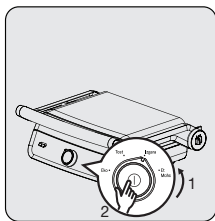


WARNING: The top cooking plate may be hot.

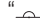
2 Usage

Two plates in horizontal position

This position provides two large grill areas. It should be preferred for foods that need to be cooked by heating from one surface.



Before turning on the appliance, use the program selection button (6) to set the desired program. Then press the on/off button (8) in the center. The appliance will start to operate.

Open the top cover of the device by holding the handle (10). Then pull it upwards. Turn the locking slide (1) to the “” symbol and tilt the top cover of the appliance backwards to a horizontal position.

Place the food to be cooked (sausages, steaks, etc.) on the cooking plate (11).



WARNING: Use utensils made of wood or heat-resistant plastic to turn or remove food from the cooking plates.



WARNING: Be very careful when removing food from the appliance, the metal parts of the appliance and the food may be very hot.

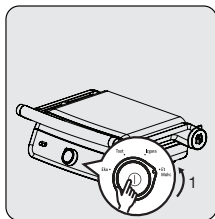
2 Usage

2.7 Grease collection tray

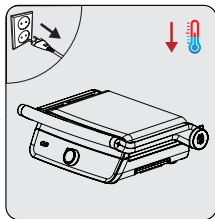
i

- There are grease drainage channels (3) on both plates of the appliance.
- Use the grease collection tray (4) for food that may leak grease or other liquids.
- Remove and clean the grease collection tray after the process.

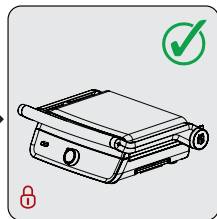
2.8 Switching off the device



Switch off your device by pressing the on/off button (8) in the center.



Unplug the appliance from the mains and allow it to cool down.



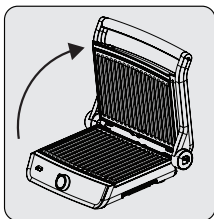
You can store your appliance by locking the locking slide (1) "🔒" in the locked position.

2 Usage

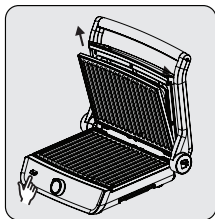
2.9 Removing / installing the plates



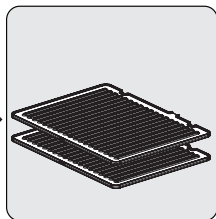
WARNING: Before touching the cooking plates, make sure that the appliance has cooled down completely. Do not touch the cooking plates when they are hot.



Open the top cover of the device by holding the handle (10).



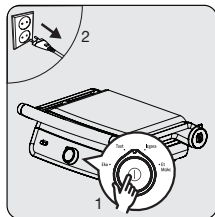
Press the plate eject button (9) on the front of the product to remove the plates.



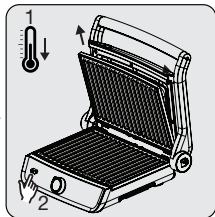
To reinsert the cooking plates (11), insert the cooking plates into the slots on the inside back of the appliance and snap them into place.

3 Cleaning and maintenance

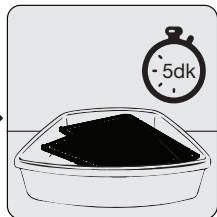
3.1 Cleaning



Turn off the appliance by pressing the center on/off button (8) and unplug the plug.



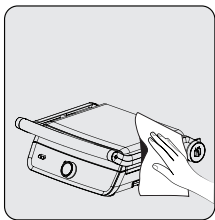
Wait for the appliance to completely cool down. Remove the cooking plates (11).



Soak the cooking plates (11) in warm water for about 5 minutes.



They can then be cleaned with liquid dishwashing detergent and a sponge with a soft surface.



Use a damp cloth to clean the outer surface of the appliance. Dry the outside of the appliance completely.



After cleaning, make sure that the plates are thoroughly dry and then attach them to your device.

3 Cleaning and maintenance



Water or moisture must never get into the electrical areas.



WARNING: Do not wash the cooking plates in the dishwasher.



After cleaning, dry all parts before using the appliance.



WARNING: White water stains may appear on plates left wet.



WARNING: Never use gasoline, solvent, abrasive cleaners, metal objects or hard brushes to clean the appliance.




Clean the device after each use to keep it well maintained.



WARNING: For easier cleaning, it is recommended to clean the plates after each cooking process after they have cooled down.

3 Cleaning and maintenance

3.2 Storage

- Unplug the appliance and allow it to cool before storing it.
- Close the appliance door by holding it by the handle (10).
- Pull the locking adjustment slide of the device to the lock position “”.
- You can optionally store the device in a horizontal or vertical position.
- If you do not intend to use the device for a long time, store it carefully.
- Store the appliance in a cool dry place.
- Wrap the appliance cable around the cable winding slot (5) on the bottom of the appliance.
- Keep the appliance out of the reach of children.

3.3 Transportation and shipping

- During transportation and shipping, carry the appliance with its original packaging. The packaging of the appliance will protect the appliance against physical damage.
- Do not place heavy objects on the device or its packaging. The appliance may get damaged.
- If the appliance is dropped, the appliance may not operate or permanent damage may occur.

Arçelik A.Ş.

Karaağaç Caddesi No:2-6, 34445,

Sütlüce / İSTANBUL / TÜRKİYE

www.arcelik.com